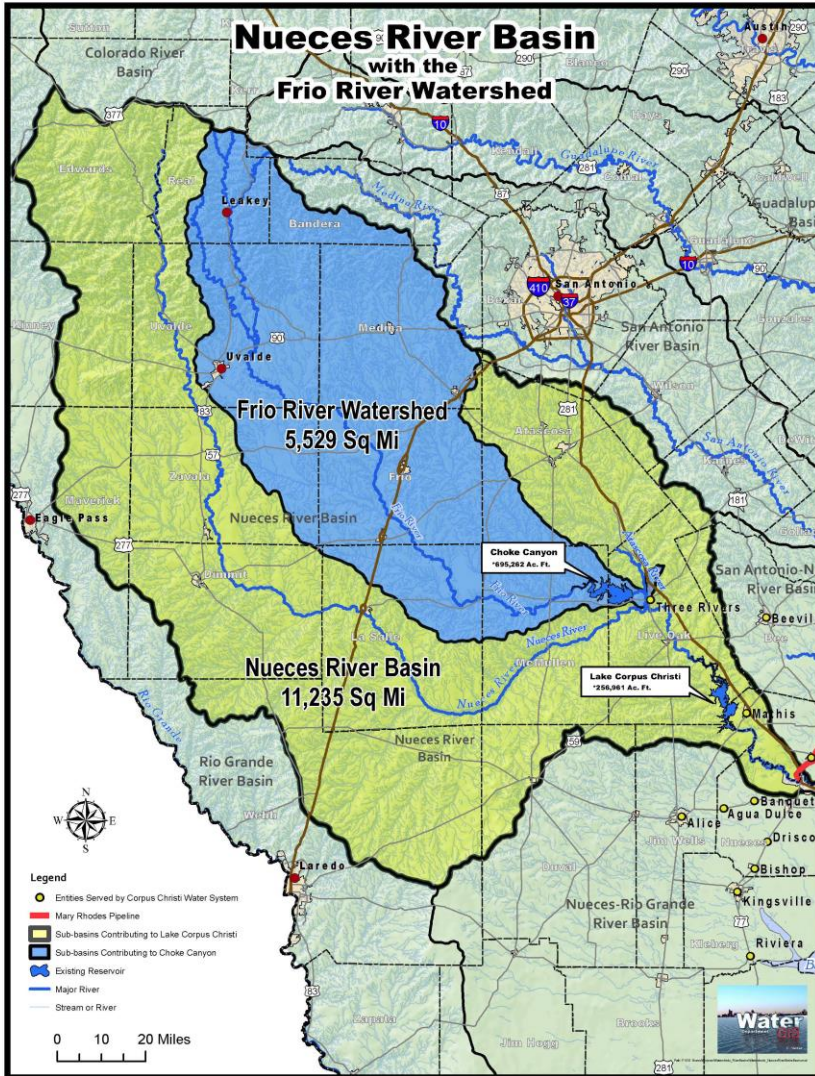


# Lake Corpus Christi – Choke Canyon Reservoir Operations Factsheet

- The City operates two water supply reservoirs in the Nueces River Basin: Choke Canyon Reservoir and Lake Corpus Christi
- Choke Canyon Reservoir is fed by the Frio River and San Miguel Creek
- Downstream of Choke Canyon, the Frio and Atascosa Rivers meet and flow into the Nueces River near Three Rivers, which flows into Lake Corpus Christi.
- The operation of this reservoir system requires balancing the needs for regional municipalities, flood control, conservation storage, and the environment flows.



## Regional Municipalities

- Throughout the year, the City releases water from Lake Corpus Christi to meet the needs of half a million residents and businesses in the Coastal Bend.
- This water flows down the Nueces River from Mathis to Calallen, where it is utilized for regional water supply.

## Flood Control

- When flood conditions arise, the City acts proactively by releasing water ahead of incoming floodwater to minimize flooding downstream.
- These incoming floodwaters are measured by upstream river gages.
- The City releases water with the intent of protecting the structural integrity of dam, minimizing impacts of downstream flooding, and maximizing storage capacity

## Conservation Storage

- When full, the combined capacity of both reservoirs is 952,531 acre-feet (~310 billion gallons)
- The City makes best efforts to fill and store water in both reservoirs whenever possible.
- This stored water is used during dry times between rain events.

## Environmental Flows

- As part of the TCEQ authorization of the Choke Canyon water permit, the City is required to send a particular amount of water to the Nueces Bay and Estuary.
- The TCEQ permit details the amount of water the City is required to release on a month-by-month basis.
- The required pass through amount decreases as the reservoirs enter drought stages.

